

TEACHING & E-LEARNING NEWS

VOLUME 1, ISSUE 4 MAY 2005

WEBCT VISTA: INFORMATION, ROUNDTABLES

In continuing to meet the requests and needs of the UNC Charlotte teaching and learning community, WebCT Vista, which has been available on the higher education market for over two years, has been licensed. Done in conjunction with the UNC system and support of the Office of the President, this proactive move will provide faculty and students with access to a greater variety of online tools and options while still using a familiar name. This summer, WebCT is upgrading all of its products from an older, proprietary architecture to the newer, standards-based architecture used by Vista. This marks a major transition for UNC Charlotte and an evolution

of learning products and opportunities from WebCT.

The implementation of WebCT Vista will occur during the next two years. Since we will carefully and systematically migrate courses, we will have dual licenses for WebCT Vista and WebCT Campus Edition during this transition. The training and support FCTeL presently provides for WebCT Campus Edition will also be in place as we transition to WebCT Vista. Over the next year as we plan and develop implementations strategies, we will be involving UNC Charlotte faculty, students, and staff in the process. Please look for Vista demonstrations, roundtable

discussions, focus groups, and department presentations. In fact, we are holding three such roundtable discussions soon. If you wish to attend any one of these sessions, please RSVP to Juandra Burris at ext. 7-3022 or fctel@email.uncc.edu.

THREE ROUNDTABLES:

Date: May 18, 2005
Time: 10am-11am
Location: 146 Atkins

Date: May 26, 2005
Time: 1:30pm-2:30pm
Location: 146 Atkins

Date: June 14, 2005
Time: 11am-12pm
Location: 146 Atkins

☐ *Mark Sivy, Associate Director, FCTeL*



HOW WILL WEBCT VISTA BE BETTER FOR MY TEACHING?

- *More comprehensive course management*
- *Enhanced student experience*
- *Collaborative course preparation*
- *Insight into e-learning impact*
- *Additional teaching and learning enhancements*

ERLI PROJECT: ENROLLMENT, RETENTION, AND LEARNING IMPROVEMENT

The ERLI Project is an exciting new initiative for academic departments from the Faculty Center for Teaching and e-Learning. FCTeL is extending and expanding our support to assist academic departments

in dealing with challenges faced at schools across the country: large enrollment, consistency across multiple sections, coordination of faculty and student instructional support, online instructional design, quality

support for online learning, student community building, student retention, appropriate use of existing technologies, faculty turnover, and failure rates.

(see ERLI Project, p.3)

INSIDE THIS ISSUE:

RESPONDUS	2
CENTRA	2
FCTeL OPEN	2
ERLI	3
TURNITIN	3
TEACHING CIRCLES	4
GOOD PRACTICE	5
DIVERSITY	5
DEPT. OUTREACH	6
RESEARCH NEWS	6

RESPONDUS UPGRADE: QUIZZING EVEN BETTER!



Respondus, our quiz creation/editing program for use with WebCT, has been upgraded from Respondus 2.x to 3.0. Respondus 3.0 supports up to nine question types, including calculated and algorithmic formats. Mathematical and scientific symbols can be inserted using the Respondus Equation Editor or Math Type. The Exam Wizard in Respondus 3.0 creates an assessment in minutes. Links to multimedia content on other servers can be created with the Web Links tool. Graphics, audio,

and video can be embedded without writing or viewing the underlying HTML links.

If you already have Respondus 2.x you can update to 3.0 within Respondus. To update Respondus 2.x to 3.0 within Respondus: Open Respondus, click Help on the Menu bar, and click Check for Updates. Respondus 2.x will automatically update to 3.0.

Faculty using WebCT are automatically given access to download Respondus from the "Faculty Resources"

course on your "My WebCT" page on the Development Server. If you do not have a WebCT course and would like to use Respondus, you can request a WebCT course at www.uncc.edu/webct/REQUEST/DEVELACCOUNT.html. If you have questions or need help with Respondus, please contact us at 7-3100 or email webct@email.uncc.edu and ask for assistance with Respondus.

□ *Zhivi Saxon, Instructional Technology Consultant*

NEW ONLINE WORKSHOP FOR CENTRA



FCTeL supports the use of Centra, a virtual classroom environment, for faculty and students at UNC Charlotte. If you'd like to see what Centra is all about, a new fully online workshop is now available:

Intro to Centra: Experience the collaborative features of this live, highly interactive virtual classroom and meeting environment in this one-hour online demonstration. In Centra you can present and discuss learning materials with participants, have

access to interactive whiteboards, real-time application sharing, breakout rooms for group activities, and other tools for effective e-learning.

You may see a video preview of the Centra's leader interface at <http://www3.uncc.edu/elearning/centra/Videos/Symposium/sleader.htm> (Windows Media Player required).

This live, online session is available on Tuesday, May 17, 2005, from 1:00pm to 2:00pm.

Email fcctl@email.uncc.edu or call Juandra Burris at extension 7-3022 to register for this session. Login details will be provided to those interested in participating.

NOTE: You will need access to the internet to attend this session. Centra's technical specifications are available at www3.uncc.edu/elearning/centra/techspecs.htm.

□ *Sam Eneman, Instructional Technology Consultant*

YES, WE'RE OPEN ALL SUMMER LONG!



Summertime is the perfect time to contact FCTeL for your teaching and e-learning needs. We understand that many faculty work on their

fall courses during the summer break, and we are here to help you. We have a host of resources available, including our Faculty e-Learning

Lab—so please contact us for a consultation (see page 6 for contact info). We look forward to hearing from you!

ERLI PROJECT (CONT. FROM P. 1)

Using a scalable and replicable model, ERLI can produce consistent outcomes, is adaptable, incorporates statistical and transformational assessment, and is at no or low cost. Our approach involves utilizing interdepartmental

innovation, cooperation, and coordination through the participation of faculty, central IT staff, student assistants, department chairs, college deans, and distributed IT staff. Presently, there are several courses at UNC Char-

lotte benefiting from this type of assistance.

If you think your course is a potential candidate for ERLI, please contact us.

☐ *Mark Sivy, Associate Director, FCTel*



NEW FEATURES, ENHANCEMENTS, TRAINING & SUPPORT TO FIGHT PLAGIARISM WITH TURNITIN

TurnItIn is UNC Charlotte's web-based tool for assessing student work for plagiarized content. It is easy to use yet very powerful, and using it has just gotten a whole lot better!

Here is a quick update on some of the new TurnItIn features, materials, and events as of April 15, 2005. Look for new updates throughout the year.

New Features and Enhancements

Download papers in bulk

Instructors can now quickly download multiple papers for an assignment from their assignment inbox in .zip format.

Improved student list upload

Instructors can now submit student lists in MS Word, MS Excel, or plain text format and will be able to easily see which students have never logged in.

Character limit for submissions increased

The character upload for submissions has been increased

from 150,000 to 1 million characters. This change lets users submit longer papers including most theses.

Upload meter for zip uploads

An upload meter has been added that shows instructors the progress of their zip uploads.

Training & Support

Research Resources

TurnItIn has a research resources site rich with information on plagiarism. The site contains information for both instructors and students and is particularly effective in outlining how to avoid plagiarism through effective research and citing sources. To view our research resources site, go to www.turnitin.com/research_site/e_home.html.

Support

For basic instructions on getting started, please refer to the guides provided by TurnItIn.com.

Instructor Quick Start Guide

& Student Quick Start Guide

For detailed instructions on

using TurnItIn, please refer to the user guides provided by TurnItIn.com.

Instructor User Guide

Student User Guide

Select the help link at the top of your TurnItIn screens (available on all pages after login).

Support for TurnItIn at UNC Charlotte

Provided by the Faculty Center for Teaching and e-Learning:

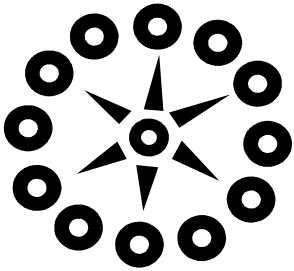
- ◆ Refer to our website at www.fctel.uncc.edu/instructional/Turnitininfo/Turnitin.html
- ◆ Contact us, via the Help Center at 7-3100.
- ◆ Email us at elarning@email.uncc.edu.

☐ *Jana Avery, e-Learning Systems Administrator*

“MANKIND HAVE
A GREAT
AVERSION TO
INTELLECTUAL
LABOR.”
DR. JOHNSON



TEACHING CIRCLES: “CAN WE TALK?” ENCOURAGING CONVERSATIONS ABOUT TEACHING & LEARNING



COME AND JOIN
ONE OF THESE
CONVERSATIONS
ABOUT
TEACHING AND
LEARNING!

For many faculty members, opportunities to talk about teaching are limited to brief encounters with colleagues around faculty mailboxes. In those few minutes, the talk may turn to the frustrations of teaching rather than to more substantive—and stimulating—teaching and learning issues. One way to encourage conversations about teaching and learning is through the formation of teaching circles.

What’s a teaching circle?

It is a group of faculty (or graduate students) who meet, on an ongoing basis, to discuss issues of teaching and learning. Membership is limited – generally to no more than 8-10 participants. And members of the circle determine the focus and topics for discussion.

What types of issue would form the focus for a teaching circle? Some circles explore relatively narrow topics (e.g., case-study teaching techniques; making large classes more interactive; mentoring graduate students). Topics for other circles, however, may be quite broad (e.g., current issues in higher education; strategies for surviving the first years in the classroom, teaching and technology).

The good news is that almost any topic is appropriate as long as a group of faculty find

it engaging and/or useful to their teaching.

Should members of the circle come from the same department or program? Not necessarily. In some cases, the focus for the circle may be inextricably connected to a particular discipline (e.g., Math instructors may decide to share materials and techniques they’ve developed for their own classes).

In other cases, circles benefit from a more heterogeneous mix of faculty perspectives on teaching challenges. As an added bonus, faculty in “mixed” circles are sometimes more open to sharing teaching experiences with colleagues outside their departments.

How Do Teaching Circles Go About Exploring Teaching/Learning Issues? Teaching circle meetings can take a variety of forms to stimulate conversation and help faculty investigate teaching/learning issues:

- Guided Discussion: Members come prepared to discuss an item (article, chapter, videotape) or issue selected by the group.

- Round-robins: Members share personal experience and knowledge on a topic of interest to the group.

- Ask the expert: An “expert” (or expert panel) is invited to share insights on a

topic.

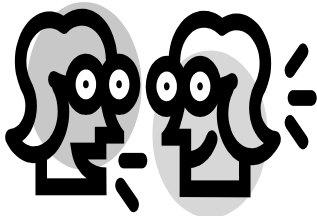
- “Progress” reports: Members report on experiments they’ve conducted with new ways of teaching.

- Peer Tutoring: Members of the group take responsibility for learning different aspects of the topic being explored by the group. At each session, one or two members report back on the material they’ve researched.

- General discussion: Meetings can be occasions for informal conversations about teaching and learning. There’s no set agenda. Participants bring in issues, questions, topics that are of interest to them.

Where can we meet? It is always a good idea to meet somewhere that is comfortable for discussions and where food or beverages are allowed. Suggested places include departmental conference rooms, Ritazza Café, the Prospector, After Hours in the Cone Center, study rooms in the Library, or even meeting off-campus for lunch or dinner.

To get involved with one of the many teaching circles at UNC Charlotte, please contact FCTeL and we help you join one of the existing circles or maybe even start your own! (see Teaching Circles, p.5)



TEACHING CIRCLES (CONT.)

There are currently nine active teaching circles which have each met multiple times during the past year. Below is a list of the circles and their facilitators.

General Discussion on Teaching and Learning: Charlie Burnap (Math) and Carol Leeman (Communication Studies)

E-Learning: Marvin Croy (Philosophy)

Writing Across the Curriculum: Meg Morgan

Information Literacy: Donna Gunter (Library-Information Commons) and Heather McCullough (Languages and Culture Studies)

Learning Communities: Mary Metzger (Library Administration) Martha Sloss

Experiential/Service Learning: Denise Smith

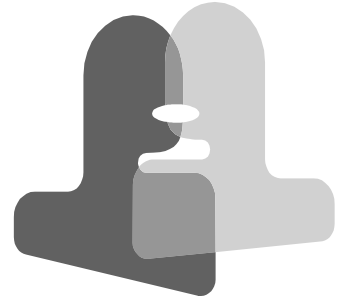
Collaborative Learning: Meg Morgan

Student Research: Jeanie Welch

Critical Thinking: Sean McCloud (Religious Studies)

Come and join one of these conversations about teaching and learning!

☐ *Sallie Ives, Director, FCTeL*



ENCOURAGING CONTACT BETWEEN STUDENTS & FACULTY: A GOOD PRACTICE!

In 1987, Chickering & Gamson analyzed several decades of research and identified “The Seven Principles for Good Practice in Undergraduate Education.” The first principle is that good undergraduate education encourages contact between faculty and students.

There are many ways in which we can reach our students, and building the sense

of community, connectedness, and rapport will help students succeed at UNC Charlotte. In class our out, online or face-to-face, student and faculty contact is extremely important. Certainly, we all make office hours available for students, and some faculty also hold “virtual” office hours using WebCT. Other students prefer to email their instructors, and this is an excellent way to

build the faculty-student relationship.

Whether it’s discussing grades, giving feedback on an assignment, or hanging out in the hallway after class and talking about the new *Star Wars* movie, encouraging students to have contact with faculty will have a lasting impact on student success.

☐ *J. Garvey Pyke, Instructional Consultant*

“ENCOURAGING STUDENTS TO HAVE CONTACT WITH FACULTY WILL HAVE A LASTING IMPACT ON STUDENT SUCCESS.”

CONGRATS TO 42 FACULTY CHOSEN TO ATTEND SUMMER INSTITUTE ON DIVERSITY

Academic Affairs has selected 42 faculty to attend a special Summer Institute by the Instructional Success in Classrooms with Diversity Planning Committee. The workshop is designed for faculty members to develop diversity curricular modules for under-

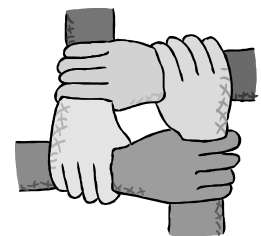
graduate courses, especially courses in the new Liberal Studies curriculum.

Special recognition goes to Provost Lorden for her support and for increasing the number of faculty attending.

The Summer Institute is part

of an ongoing series of professional development opportunities regarding diversity and classroom learning.

For resources such as articles and teaching tips, please see the Diversity Website at www.provost.uncc.edu/diversity.





Faculty Center for Teaching and e-Learning

FACULTY CENTER FOR TEACHING AND E-LEARNING
THE UNIVERSITY OF NORTH CAROLINA AT CHARLOTTE

149C Atkins Library
The University of North Carolina at Charlotte
Charlotte, NC 28223

Phone: 704.687.3022

Fax: 704.687.3894

Email: fctel@email.uncc.edu

FCTeL Homepage: www.fctel.uncc.edu

WebCT Support: www.uncc.edu/webct

Student E-Learning: www3.uncc.edu/elearning

WE'RE ON THE WEB!

WWW.FCTEL.UNCC.EDU



BRIDGING METHODS OF INSTRUCTION
WITH EMERGING TECHNOLOGIES.

ATTN. ACADEMIC DEPARTMENTS!

As part of our outreach, we would like to come to one of your regular departmental meetings to discuss how the Faculty Center for Teaching and e-Learning can better meet your department's Instructional and e-Learning needs. We provide services ranging from training and consultations to direct support for instruction, course management, and e-learning tools.

We would like to take no more than ten minutes of your meeting time to give some brief information and take a few questions. Our focus would be to introduce ways in which we could help support your department in the classroom and beyond, virtually or otherwise.

We welcome the opportunity to be part of your next departmental meeting. Please let us know when it will be held and if you have any questions you would like for us to address. We are available to meet with you anytime. Just contact fctel@email.uncc.edu for more information.

Thanks,

Lorraine Stanton, Manager of e-Learning Support
J. Garvey Pyke, Instructional Consultant

FACULTY RESEARCH SPOTLIGHT: SURVEYSHARE ASSISTS IN WORLDWIDE STUDY

SurveyShare and FCTeL have allowed me to go global. With my two Manchester, England-based colleagues, I am conducting a worldwide, six continent public relations managerial study. Using SurveyShare and the FCTeL's expert staff, we designed the survey and now have implemented it on a worldwide basis. This feature has allowed us to significantly advance managerial role theory and update 30 years of research.

The program was straight forward, user friendly from

both my perspective and those of my respondents, and allowed me to input paper survey data directly into SurveyShare to then email to my stats guru in the UK.

The best feature of this process was that the FCTeL staff never made me feel like a neophyte; they took care of the program details so I could concentrate on the content. This is truly a process based on the content using the technology to accomplish a goal, rather than the other way around.

Thank you, FCTeL, and thank you, too, SurveyShare!

□ *Dr. Barbara DeSanto, APR, Fellow PRSA, Associate Professor, Department of Communication Studies*

NOTE: If you would like to learn more about SurveyShare or request an account, please see our SurveyShare web page at www.fctel.uncc.edu/instructional/surveyshare.

SurveyShare has many powerful features yet it is very user-friendly. We encourage you to give it a try!

"SURVEYSHARE
AND FCTEL
HAVE ALLOWED
ME TO GO
GLOBAL."

